



Site Lines

SUMMER 2011

**SOUTH KINGSTOWN
LAND TRUST**

SKLT 'GREAT OUTDOORS CELEBRATION' COMING IN AUGUST

On Sunday August 14th, SKLT presents the "Great Outdoors Celebration" from 4 to 6:30pm at the SKLT Barn. This fun and festive event, with its live auction of original art, terrific garden features, and travel adventures, celebrates our success in saving 2,450 acres of beautiful South Kingstown land and raises funds to support further land acquisition and preservation of our town's landscape.

We wish to thank our honorary chairs Will and Whitney Cummer, and the following generous sponsors: Karen Kames and Chris Gaffney, Troy West Architect – Contemporary

Design, South County Steel, P. Schurman Contractors, James V. Aukerman & Associates, Coastal Properties, Lila Delman Real Estate, Citizen's Bank, Marc One Coin Co. and Universal Firearms LTD. If you would like to add your company's name to the list of sponsors, please contact Claudia Swain at 789-0962.

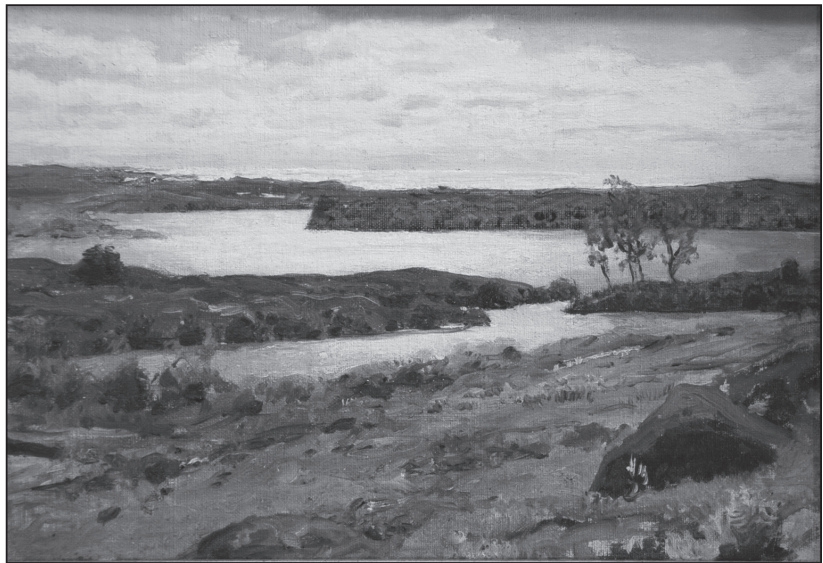
Look for your invitation in the mail in late June. Be sure to bring a friend to enjoy a lovely afternoon and help protect open space. Thank you for your support!

PAINTING ON THE LANDSCAPE

Many of us at SKLT were inspired by an exhibit of art entitled "A Sense of Place: Painters of Matunuck, Rhode Island, 1873-1941," curated by Lindsay Leard-Coolidge, an art historian who summers in Matunuck and wrote a lovely book accompanying the exhibition. This delightful collection of works, shown this winter at the Lyman Allyn Art Museum of New London, Connecticut, was done over a 70-year period in the late 19th and 20th centuries by artists who came to the area and were inspired by its beauty to paint in the out of doors, known as plein air painting.

What was thrilling to those of us who saw the show and Lindsay's beautiful book, was that many of these scenes still exist today, thanks in part to the protection of these lands by SKLT. We've decided that it's time to get out there and paint!

This summer, on six consecutive Thursdays beginning July 7, we are inviting artists - beginners as well as seasoned - to sign up and join us on many of the same beautiful lands as were depicted in a bygone day. Bring your stool, painting supplies, a sandwich, and come paint the landscape at several charming locations we've been given special permission to use. We'll



"The Salt Pond and Perch Cove" by Anna Richards Brewster

provide cookies and lemonade.

Space is limited, so register early! Cost is \$25 for members and \$45 for non-members. We will ask artists to display selected paintings at the Barn during our "Great Outdoors Celebration" on August 14th. Call the office at 789-0962 to register.



Spring House on the Biscuit City Mill Property

OLD BISCUIT CITY MILL: SKLT SITE IMPROVEMENT PLANS ARE COMING TOGETHER

Biscuit City may a little known metropolis in southern New England - located about halfway up Kingston Hill's west slope, nestled in a small stream valley. If you haven't heard of it, perhaps that's because most of this city's inhabitants are the tall and silent types - ash, oak, maple, hickory, and rhododendron, with a smattering of more animated but somewhat disorganized ducks, songbirds, turtles, fish, squirrels, opossums, skunks, chipmunks, deer, and the occasional beaver. Though we haven't seen any recent records of Biscuit City council meetings, we hope the plans we have will meet with the approval of its residents, human and otherwise.

Our plans concentrate on the heart of the Biscuit City area, a 12-acre parcel that SKLT received from the Kingston Improvement

Association in 2001. It contains the impressive ruins of the old Biscuit City Mill and associated structures built in the early 1800s, as well as a spring house constructed in the 1920s to exploit the "Great Spring" as the source for the first Kingston Water System. The old mill pond at the center of the site is a visual gem, reflecting the tall trees growing on the surrounding slopes, gathering the flow from the spring, and issuing it out over falls to a rhododendron-covered valley downstream.

We will restore and/or improve some of the failing features that detract from the site's beauty, including the existing main walking path leading from Biscuit City Road to the mill pond and Springdale Road and the spring house exterior. Plans for these tasks are underway, in part with the generous help of the Mary LeMoine Potter Fund. SKLT is now seeking donations totaling about \$5000 to match these grant funds. Please call Claudia Swain at 789-0962 if you can help.

The ecological health of the Biscuit City site is also being rapidly altered by exotic invasive plants. SKLT will continue our work on removing the burning bush, Asian bittersweet, Japanese barberry, Morrow's and Japanese honeysuckles, Japanese knot-weed and other rogues, and restore the area with native plantings.

Finally, we want to educate the public about the notable historical and cultural values of the site. We thank Katherine Long for gathering information on the history of the uses of the mill and other structures and leading SKLT in nominating the site for the National Register of Historic Places. Associated with this effort SKLT will consider plans for gently improving the quality of walking trails, and creating interpretive signage for visitors. In May, SKLT and URI Landscape Architecture students presented a series of student projects focusing on Biscuit City Pond's potential as a natural, cultural and recreational site.



Exploring the foundation of the mill

Photos: Claudia Swain

STEP INTO THE PAST AT PERRYVILLE DAYS, JULY 3RD

This year, Perryville Days will return to the Barn on Matunuck Beach Road on Sunday July 3rd. If you are a regular visitor to this event, you are probably already anticipating it; if you haven't attended in the past, mark your calendar now so you won't miss a great time. Beginning at noon, exhibits offer a little something for the whole family, including the always delightful antique car show with proud owners and cars from all over the area. As always, Don Bousquet will present a prize for his favorite auto. We never know how he determines the winner, but it is all in good fun, and someone has to win.

We think some new baby goats about to be born will make their first public appearance at Perryville Days. Bob and Diane Smith's famous jonnycakes will be served hot off the griddle. You are invited to walk the perimeter trail around the Weeden farm property just south of the Barn itself, if you need a respite from the crowds. There is certain to

Photo: Claudia Swain



Visitors estimate the number of jellybeans - the same number as acres preserved by SKLT

be a band on the porch, and exhibits featuring treasures from Perryville's past. Come on out and enjoy a real old-fashioned fun day.

BACK BY POPULAR DEMAND...

Last December, at SKLT's showing of the movie *Fresh* - members arrived with the most delicious offerings for our potluck - here's one of those recipes. We asked folks to incorporate local foods into their dishes - to reflect the movie's goal to raise awareness and turn inspiration into action. What better way than eating great fresh food?! Thanks again to members Ron & Eugenie Maine for bringing *Fresh* to SKLT.

Nina Briggs' Chard Pie

20 oz chard
4 eggs
2 oz. sour cream
2 oz. grated parmesan
2 oz. grated cheddar
Buttered crumb topping

Cook chard, squeeze out moisture and chop. Combine cheeses and sour cream, add drained, chopped chard and mix well. Pour into greased pie plate, sprinkle with crumb topping, and bake for 35 min. at 350 degrees. Buttered crumb topping: toast fine bread crumbs in butter in a pan. Make amount to taste.

Save These Dates - Events at SKLT Barn (unless noted)

June 18	Prest Farm hike, 11 am* (meet at site)
July 3	Perryville Days, starts at noon
July 9	Matunuck artists colony – history talk & hike, 4 pm* (meet at site)
July 13	Alanna Mitchell Talk on Oceans, 6:30 to 9 pm
July 16	English Country Dance, 7:30 to 10:30 pm, potluck at 5:30 pm
July 24	Hike at Yawgoo Pond, 2 pm* (meet at site)
Aug. 14	Great Outdoors Celebration & Auction, 4 to 6:30 pm
Sept. 25	Hike at Weeden Farm, 1 pm*

* Please register at 789-0962 or jane.baumann@sklt.org to get directions to sites

LIGHTS, CAMERA, ACTION!

SKLT property was the setting for a scene in an upcoming blockbuster film with a host of top Hollywood stars. The set was a Boy Scout camp in the 1960s; those of us old enough to remember what camp looked like in the '60s found it authentic and a bit nostalgic. Little tents popped up all over our Bayfield property off Camp Fuller Road, as well as a small mess hall, latrine and the classic lanyard board.

Well known director Wes Anderson made it clear this property was the only one that he wanted for the scene. Its rolling pasture - where cows had been grazing just days before - and large rock outcrops created the perfect backdrop for this scene.

Once the stage was set, the cast arrived for a three-day shoot, catching some of the only good weather we had in May. Actor Ed Norton was the scoutmaster,



Bayfield Farm

delighting all who saw him. Although a few land trust members managed to get down the road to catch a glimpse of the shooting, pictures were not permitted, so all of us will have to wait for the show to open. Keep your eyes peeled for "Moonrise Kingdom," starring Norton, Bruce Willis, Frances McDormand, Tilda Swinton, Bill Murray and Jason

Schwartzman. How's that for a star-studded group?

SKLT President Mike Sherry spent hours making certain all was in order for the filming. Once it was completed without any problem, he was ready to do it all over again, showing off land trust property. "This is a win, win situation for the land trust and town of South Kingstown," Sherry stated, "We get to show off some of our most beautiful property, and the town gets a nice stimulus from the cast and crew working, eating and playing in South Kingstown."

WELCOME TO SKLT'S NEWEST TRUSTEES

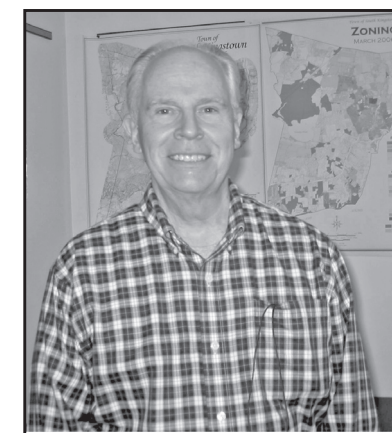
At our Annual Meeting in April, SKLT experienced a changing of the guard. After 27 years of dedicated service, Bill Wallace stepped down from his long-held post on the board of trustees. Bill's legacy will be his enthusiasm for protecting land, stewarding our properties and staying in touch with community members to further our cause. He will remain an active member of SKLT, but will no longer have to show up for Saturday morning board meetings!

Sally Olsen also stepped down after many years of service. Sally was the voice of SKLT in the newspaper with a series of articles on topics important to our town. She'll continue to be an active member of the Auction Committee where she has brought us significant pieces of local art, fabulous vacation destinations and truly amazing collections of garden plants to raise support for SKLT.

After 13 years, Anne O'Neill has stepped off the board. Thankfully, she'll continue to serve on the Development Committee and the Auction Committee, as her skills have made her too valuable to let go too far.



Carolyn Moutrop



Jim Farrell

New to the board is auction committee member, Carolyn Moutrop. Born at South County Hospital and raised in Wakefield, Carolyn says she accepted the position of trustee of SKLT because "... I believe the land trust is doing a great job preserving the rural character of South Kingstown. Having grown up in Wakefield I have strong memories of open spaces and natural beauty and would like the opportunity to help keep it that way." She also enjoys hiking the trails with friends and family members, including husband David Moutrop, who was born in Providence and grew up in West Kingstown.

Also new this year is James Farrell. "I appreciate the work the Land Trust does to preserve open space for the benefit and enjoyment of current and future generations. I want to support these efforts." Jim's wife, Hope, is from Rhode Island, and for 40 years they returned to Souty County

for visits. In 2006 they moved here full time from Riverside, Connecticut, looking for a more relaxed environment with a friendly, courteous and caring community. We are happy to have them!

SUPPORT SKLT WITH AN IRA DISTRIBUTION

There is some good news for those SKLT donors who own IRAs and are age 70½ (or older) in 2011! Throughout 2011, you can use your required minimum distribution from your IRA and give it directly to SKLT.

Included in the Tax Relief, Unemployment Insurance Reauthorization and Job Creation Act of 2010 was an extension of the Charitable IRA Rollover provision through December 31, 2011. This provision allows individuals to make charitable gifts from their Individual Retirement Accounts (IRAs). Unless extended, this will only happen in 2011.

To make a gift from an IRA, simply contact your plan's office. If you would like a sample letter to provide to your Plan Administrator, please call the office at 789-0962, or email claudia.swain@sklt.org. As with all financial matters, it is best to consult your personal financial advisor.

MILESTONES

A little more than a decade ago, percolation pipes appeared on the landscape that is Bayfield Farm. These plastic tubes foretold the future for the pastures, cows, wildlife, and neighbors of this enclave of land that time forgot. Having grown up in this area, I was sorry to see the impending loss of another local farm. This feeling of loss became the rallying force that brought me to the South Kingstown Land Trust and focused our effort to preserve the Bayfield Farm. Discussions with SKLT, abutting property owners, the Town of South Kingstown, and others made it clear that my sense of loss was shared by others who were also willing to act to save this farm. Under the professional leadership of Joanne Riccitelli, SKLT's Land Protection Director, and the generous donations of many, Bayfield Farm has rested quietly for the past decade safe from the threat of development.

As with all things quiet and peaceful, some excitement is good for the soul. The excitement for Bayfield Farm came in the form of film director Wes Anderson who happened to be visiting the area for suitable locations for his movie, "Moonrise Kingdom." Wes said "I discovered some spectacular farmland this winter in South Kingstown - gently rolling fields with beautiful stone walls. The trees have not been cleared, and there are large rocks all around. I don't know what you could grow there - but if I were a cow I think this would be my favorite place to graze in all of New England. As it is, I have settled for shooting a movie scene on the South Kingstown Land Trust, and this has been an extremely happy experience." Arrangements were made and filming brought a bustle of activity on the farm for several days. Cows and people watched the frenetic activity that surrounds the 'hurry up and wait' life of filmmaking. The actors, workers, and sets disappeared as rapidly as they had appeared. Bayfield Farm went back to sleep, its cows grazing peacefully, safe in the knowledge that their pastures would be there forever.

It is nice to know that Bayfield Farm, a special place that many in South Kingstown worked so hard to preserve for the future, was also seen as a special place worthy of sharing on the big screen.

Special thanks to all those who helped share the Bayfield Farm.



Michael A. Sherry, President

Update your e-mail

Stay on top of what's happening at SKLT by joining our e-mail list. If you haven't sent us your e-mail, or need to update an old address, please e-mail jane.baumann@sklt.org. You will be surprised at how much is going on!

SOUTH KINGSTOWN LAND TRUST

The mission of the South Kingstown Land Trust is to conserve and protect the natural resources and open spaces of our town for the enduring benefit of our community.

Officers

President: Michael A. Sherry
Vice President: Paul Schurman
Treasurer: Charles M. Lewis
Secretary: Sophie Page Lewis

Trustees

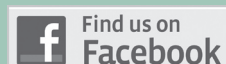
James V. Aukerman
James Farrell
Kathleen Peterson Hahn
Christopher Little
Kevin McDonough
Doug McGovern
Carolyn Moulthrop
Peter Nunes
Carl Sawyer
Carroll Tickner

Staff

Joanne Riccitelli,
Land Protection Director
Clarkson Collins,
Land Management Director
Claudia Swain,
Development Director
Jane Baumann,
Membership Coordinator
Mike Bontecou,
Land Operations Coordinator

Main Office
313 Main Street, Ste C, Wakefield, RI 02879
401-789-0962
Field Office (SKLT Barn)
17 Matunuck Beach Road
401-783-4999

Site Lines Designer, Cindy Sabato, Volunteer



TWO HIKES WITH SKLT THIS SUMMER

Did you catch the beautiful art exhibit of the Matunuck artists colony painters at the Lyman Allyn Art Gallery in New London? One of the most interesting painters was Anna Richards Brewster who built a summer camp high in the Matunuck Hills on Cedar Swamp Pond. Her camp, almost untouched since she left, is now the property of The Nature Conservancy, which has graciously permitted us to take you there on a hike, **July 9th** at 4 pm.

On **July 24th** we will hike our newest trail at Yawgoo Pond. We'll meet at our new parking area, made possible by a RIDEM Trails Grant, on Barber's Pond Road in West Kingston at 2 pm. Please bring hand clippers to help remove encroaching invasives! Then cool your feet at the sandy beach at the end of the trail.

Please register in advance for either of these hikes at 789-0962 or jane.baumann@sklt.org.



Cedar Swamp Pond

JOIN US IN PRESERVING OPEN SPACE IN SOUTH KINGSTOWN

Your support for open space preservation continues to strengthen our organization and invigorate our work. Join or renew your membership, make a general donation, or become an EverGreen member! SKLT is a non-profit 501(c)(3) organization so your donation is tax-deductible. As always, your generosity is greatly appreciated.

MEMBERSHIP:

I would like to: ☐ Join ☐ Renew

- ☐ Individual..... \$30
- ☐ Family \$50
- ☐ Protector \$51-99
- ☐ Steward..... \$100-\$149
- ☐ Guardian \$150-\$499
- ☐ Conservator..... \$500-\$999
- ☐ Benefactor..... \$1000+

Name: _____

Address: _____

City _____ State _____ Zip _____

Phone _____

E-mail _____

GENERAL DONATION:

I'm already a member, but I would like to make a general donation. Please accept my check in the amount of \$_____.



EVERGREEN:

I have already planned a gift to SKLT and qualify to be an EverGreen member through:

☐ Estate Plans ☐ Trust ☐ Other

- ☐ I am a landowner interested in preserving my land.
- ☐ Please contact me about making a Legacy gift.
- ☐ My employer will match my gift. I've enclosed a matching gift form.

Please make checks payable to:
South Kingstown Land Trust

313 Main Street, Suite C, Wakefield, RI 02879



SOUTH KINGSTOWN LAND TRUST
313 MAIN STREET, SUITE C
WAKEFIELD, RI 02879

Non-Profit
Organization
U.S. Postage
PAID
West Kingston, RI
Permit No. 2

Site Lines

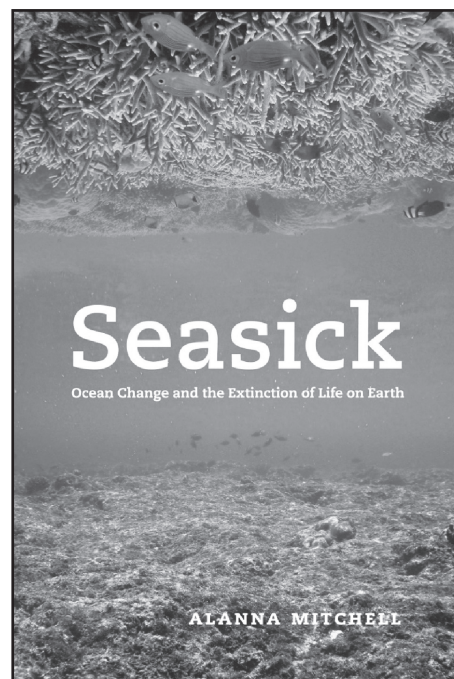


INSPIRED BY THE SEA

SKLT invites our members to a special evening with award-winning author Alanna Mitchell on Wednesday, July 13th from 6:30 to 9 pm. Mitchell is an inspirational speaker and Canadian journalist and author who writes about science and social trends. Her talk at the Barn is sponsored by The Nature Conservancy.

Mitchell's most recent book, *Seasick*, is an international best-seller that won the prestigious Grantham Prize in 2010 for excellence in environmental journalism. In this book, Mitchell dives beneath the surface of the world's oceans to give readers a sense of how this watery realm can be managed and preserved, and along with it, life on earth. Mitchell is also the author of *Dancing at the Dead Sea*, which tracks the spectacular biodiversity of some of the world's environmental hotspots.

Please bring a potluck appetizer inspired by the sea! Seating is limited, so please RSVP by July 8 to 401-331-7110 x21 or email SouthCounty@tnc.org. Book signing will follow.



8

Open Space Makes All the Difference