



Site Lines

SPRING 2013

SOUTH KINGSTOWN
LAND TRUST

CURIOUS ABOUT NARWHALS?

Come to a lecture at the Barn by Todd McLeish on Thursday March 14th - 6:30 p.m. for potluck desserts, then the program at 7 p.m. With his new book in hand – *Narwhals: Arctic Whales in a Melting World*– author Todd McLeish will recount his adventures studying the elusive narwhal, the rare Arctic whale with the spiral tusk. He will take his audience high above the Arctic Circle with teams of narwhal researchers seeking to solve the mysteries of the animal's migrations and debating the purpose of its tusk. He



will also share insights about the importance of narwhals in Inuit culture and how the warming planet is affecting the species. Along the way you'll hear about the many other unique animals living in the narwhal's frozen world, from walrus and polar bears to bowhead and beluga whales.

Todd is a Rhode Island-based science writer who has been writing about wildlife and environmental issues for more than 20 years. In more than 100 magazine articles he has highlighted numerous threatened species, profiled biologists and wildlife artists, and described encounters with a wide variety of backyard wildlife. His previous books have examined the lives of some of New England's rarest creatures, from right whales and basking sharks to roseate terns and burying beetles.

RI LAND AND WATER SUMMIT ON MARCH 9TH

The annual Land and Water Conservation Summit is scheduled for March 9th at the University of Rhode Island Memorial Student Union. Everyone interested in land and water conservation or preservation is invited to attend. This is the only statewide meeting of its kind and is always a day full of great presentations, fine speakers and many opportunities to meet and exchange ideas with folks working in these fields in RI.

Sponsored by the RI Land Trust Council and Narragansett Bay Estuary Program the event always draws several hundred interested and interesting people to hear what is on the front line

of land and water conservation right now. There are workshops, speakers, and vendors providing information that you just can't find anywhere else. Check out the line-up and then sign up! We all look forward to seeing you there. Learn more and register at www.landandwaterpartnership.org.

One more thing - our keynote speaker this year is an amazing storyteller, Steve Archibald, Education and Outreach specialist at the Arthur Carhart National Wilderness Training Center in Montana. Also terrific on this year's schedule is local award-winning storyteller Bill Harley.



Rhode Island
Land Trust Council



HELP SKLT ON MONITORING DAY

Wow, it's that time again! Our 5th annual Monitoring Day is scheduled for Sunday, March 24th at 2 p.m. at the Barn on Matunuck Beach Road. This is the day when our invaluable volunteers monitor all 150 properties that SKLT owns or protects by conservation easement. All indications are that it will be easier than ever to get the job done.

Please volunteer if you have never done this before. We offer a training session for new volunteers and try to send you out with experienced monitors.

Returning monitors may sign up now and request areas you have monitored in years past. Then, on the 24th, just show up, pick up your packets and your identification card and be on your way.

Our intrepid monitoring maven, Sophie Lewis, is in the process of preparing a packet for each of our

properties containing all you need to get the job done. Volunteers Susie Bowers and Jane Buxton have been invaluable help to Sophie. Please bring a camera as we do need pictures for our records. We've been lucky with weather in the past, but should we have a downpour or blizzard, call the office for an update.

To thank you for your help, we invite you to bring your completed packages and join us for a simple dinner and wonderful bonfire at the Barn, starting at 5 p.m. This is always an enjoyable day and we hope to have as many of you as possible joining us this year.

SKLT's monitoring day has received much praise in the RI land trust community for its innovative and efficient method of monitoring. We are proud of what this day has become and invite you to share it with us! Sign up at jane.baumann@sklt.org.

NEW DUVAL TRAIL KIOSK

On a crisp, sunny fall day in November, 24 Boy Scouts from Troop 44 Matunuck met at the head of SKLT's DuVal trail on Post Road in Perryville.



Photo: Sophie Lewis

Their purpose was to raise a kiosk to shelter maps and informational material about the trail. As his Eagle project, Alex DeLuca from the Troop had worked out the design with SKLT's Clark Collins and obtained donations and a grant from Lowe's Eagle Scout Project to cover cost of supplies. After a couple of hours, holes had been dug, support posts had been cemented in, the roof had been raised and nailed in and the grounds had been cleaned up! Congrats and many thanks to Alex and Troop 44! Join Clark Collins on April 27th at 1 p.m. for a guided hike on the DuVal trail – take a look at the new kiosk, explore new loop trails and learn about more trail work to come. Register at jane.baumann@sklt.org.

NEW SELF-GUIDED WEEDEN FARM HIKE

Here's a great new hike that's perfect for a late winter day! Hike around Weeden Farm following Doug McGovern's wonderful new stone wall guide to the geology of the rocks and stones in the beautiful walls that have been restored by SKLT's own "Rock Stars". The guide can be found at the kiosk in the parking lot at the Barn, 17 Matunuck Beach Road. You can park right there, take a guide and hike. You will find lots of information on the walls and at points along the hike that have been marked for your convenience. Please give it a try and let us know how you enjoyed it.

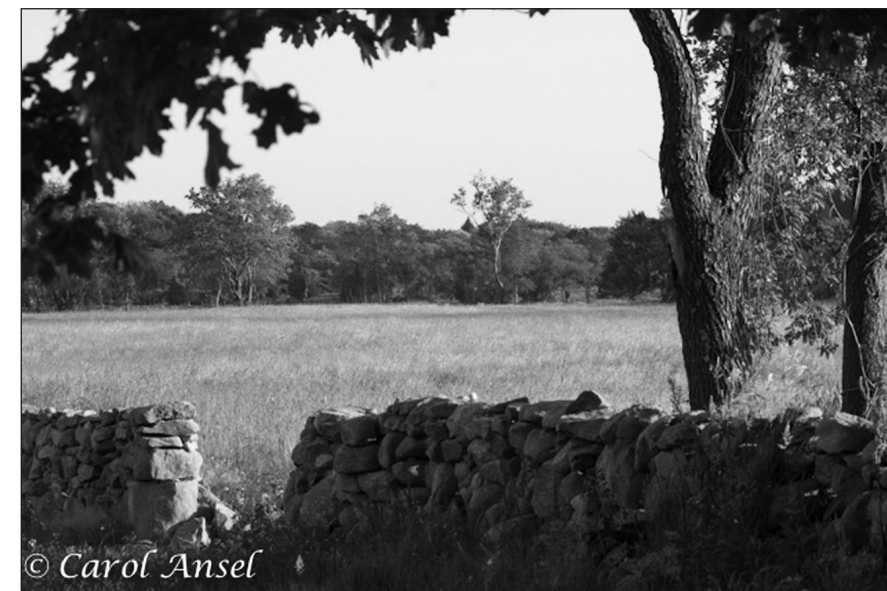


Photo: Carol Ansel

SKLT Hosts FINAL RINHS LECTURE IN APRIL

The RI Natural History Survey's 2012-2013 Gould lecture series focuses on *Open Space and Farmland Protection: Benefiting People and Ecosystems*. Each lecture is moderated by Scott Millar, Sustainable Watersheds Administrator at RIDEM.

Join us at the Barn on Thursday, April 4th at 6 p.m. for potluck appetizers and dessert, followed by a 7 p.m. lecture featuring two speakers from USEPA Atlantic Ecology Division. Dr. Bryan Milstead will speak on *From Landscapes to Lakes: How Land Use Affects Water Quality and Aesthetics*, and Dr. Marisa Mazzotta on *The Economic Benefits of Green Infrastructure*. Learn more at www.rinhs.org.

Please RSVP to jane.baumann@sklt.org so that we can plan for seating and eating!

HELP US GROW A NATURAL SCULPTURE GARDEN

At the corner of Green Hill Beach Road and Matunuck Schoolhouse Road is a 22-acre parcel of land owned by SKLT, outstanding for its lush beauty, nurtured by a cold-water brook that flows down from Factory Pond to Green Hill Pond and the ocean. Much of the eastern part of the property is shrub swamp, but along the western side lie about three acres of level upland with well spaced trees and shade-tolerant grasses left over from former meadowland. Neighbors and friends of the property often walk on the deer trails and

imagine a place where the natural beauty can blend with nature inspired art. SKLT member Troy West, a Green Hill artist and architect, has gathered a group of artists who will contribute to a sculpture trail that would wind along the west side of the property. SKLT is looking for volunteers to advance this project through the planning and development process, including site clearing. Please contact Clark Collins at 783-4999 or clark.collins@sklt.org to help.

Save These Dates - Events at SKLT Barn (unless noted)

Mar. 9	RI Land and Water Conservation Summit, URI
Mar. 9, 23	English Country Dances, 7:30 - 10:30 p.m.
Mar. 14	Todd McLeish lecture*, potluck desserts – 6:30 p.m., 7 p.m. program
Mar. 24	SKLT Monitoring Day*, 2 p.m., Dinner 5 p.m.
Apr. 4	RINHS Lecture*, 6 p.m. potluck appetizers, 7 p.m. program
Apr. 6, 27	English Country Dances, 7:30 - 10:30 p.m.
Apr. 14	SKLT Annual Meeting & Rhody Native, 3 p.m.
Apr. 27	Hike at DuVal Trail, new loops*, 1 p.m.
May 18	English Country Dance, 7:30 - 10:30 p.m.
July 7	South County Antique Car Show
Aug. 11	SKLT Auction

* Please register at jane.baumann@sklt.org or call 789-0962.

MORE PROTECTED LAND ON YAWGOO POND

SKLT is pleased to announce the protection of 10 acres of land on the west side of Yawgoo pond, donated by Hays & Linda Rockwell. SKLT now protects over half the shoreline of this sparsely developed freshwater pond.

The Rockwells donated a conservation easement on a portion of their land which abuts land belonging to SKLT on the south end of the pond. Combined with SKLT land on the east side of the pond, SKLT now protects 75 acres of land abutting the shores of Yawgoo Pond. SKLT thanks the Rockwells for their perseverance in getting this land into permanent protection.



Photo: Sophie Lewis

EXPLORE SKLT'S NEW WEBSITE!

You'll find the excellent content from our previous site – detailed trail maps with driving directions, protected properties map and membership info – plus details of our myriad stewardship projects, recent land acquisitions and more! Making its debut on the new website is a wonderful six-minute film about SKLT's chestnut orchard. We've also included photos of properties and events, and more background on our organization and our work. Take a look – the new site goes live in early March!

A NOTE FROM SKLT'S NEWEST EVERGREEN MEMBERS KEVIN AND MARYLEE McDONOUGH

Our family's decision to become EverGreen members by including the South Kingstown Land Trust in our will is a natural extension of our commitment to the Trust while on this side of the grass.

In 1998 we organized a coalition of neighbors to preserve Ward's pasture in Green Hill by purchasing the meadows and donating them to the SKLT in order to prevent development and preserve in perpetuity what Samuel Ward once cherished. This model of preservation has been replicated by others saving more of the rural character of our town including Bayfield Farm. It was also the impetus that landed Kevin as a trustee on the board of SKLT from where he has broadened his conservation passion to include being a board member and past President of the Rhode Island Land Trust Council and the Vice President of the Rocky Point



Foundation, instrumental in protecting the former Rocky Point amusement park from becoming condominiums and instead adding it as a jewel in the State's vision for the Narragansett Bay Park system.

Kevin's son while in high school in the 90's volunteered to design and implement the Land Trust's first web site which has stood the test of time to only now be replaced with a redesigned version.

We plan to continue to support the Land Trust while alive yet there is solace in knowing that even after we depart this world our EverGreen commitment will live on to further the mission of the SKLT for our children and grand-children.

FORESTRY WORK AT THE BROWNING WOODS FARM

With the assistance of Natural Resource Conservation Service EQIP grants, SKLT has been carrying out forest improvement and habitat conservation projects along its 2.25 mile Browning Woods hiking trail. In accordance with our 2009 forest management plan we created a 3.5-acre forest clearing to enhance wildlife habitat diversity in our 260-acre refuge and to provide a more age-diverse tree population. This fall and winter SKLT staff and volunteers have been carrying out a second element of the forest management plan—a light to moderate forest thinning in a six-acre area in the northwest corner of

the property. Staff members Michael Bontecou and Clark Collins, and volunteer Lodowick Collins are taking out poorly formed and unthrifty trees that block sunlight from more promising stock. We are now stacking the wood in four-foot lengths to be sold after seasoning. This spring we will be beginning a similar 4-acre wildlife habitat enhancement and timber stand improvement effort adjacent to the old Browning Homestead site along the east side of the Browning Woods trail loop. We'll let you know when the wood is available for sale.

MILESTONES

Winter is waning and the signs of spring renewal are just around the corner.

Driving on Jerry Brown Farm Road every day I see the signs of renewal at the former Bud Browning farm. The fields are being stripped of years of invasive encroachment. The stone walls are visible again. The percolation pipes poking out of the ground these many years and portending impending loss are no longer a threat. There is an inner peace in knowing that this scene will not be obliterated by future development. I note with great sadness the final death (due to hurricane Sandy) of the beach plum tree that provided delicious fruit for most of my life around the farm.

There is an unfolding entertainment value in watching the renewal of the farm. What animals will be grazing and giving birth in those fields in the spring? What crops will be growing this summer? What products will the farm produce this fall?

All this results from the commitment you, our members, have to the vision of what is important to your quality of life and sense of place. Please take a trip down Jerry Brown Farm Road and enjoy the renewal of the farm.

2013 brings special meaning to SKLT as it is our 30th year of working to protect the special places in our town. Thanks again for your support of the South Kingstown Land Trust and its mission.

Sincerely,



Mike Sherry



Like SKLT on Facebook!

Another way to keep in touch with SKLT events and projects is on Facebook. If you use Facebook, please 'like' us!

SOUTH KINGSTOWN LAND TRUST

The mission of the South Kingstown Land Trust is to conserve and protect the natural resources and open spaces of our town for the enduring benefit of our community.

Officers

President: Michael A. Sherry
Vice President: Paul Schurman
Treasurer: Charles M. Lewis
Secretary: Sophie Page Lewis

Trustees

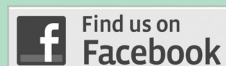
Edward Cimilluca
Martha Day
James Farrell
Linda Green
Kathleen Peterson Hahn
Kevin McDonough
Doug McGovern
Carolyn Moulthrop
Peter Nunes
Anne O'Neill
Carroll Tickner

Staff

Joanne Riccitelli,
Land Protection Director
Clarkson Collins,
Land Management Director
Jane Baumann,
Membership Coordinator
Michael Bontecou,
Land Operations Coordinator

Main Office
227 Robinson Street, Wakefield, RI 02879
401-789-0962
Field Office (SKLT Barn)
17 Matunuck Beach Road
401-783-4999

Site Lines Designer, Cindy Sabato, Volunteer



URI MASTER GARDENERS INSTALL PURPLE MARTIN DOMICILE AT WEEDEN FARM

Last September, a crack crew of URI Master Gardener Volunteers under the direction of Rudi Hempe installed a specially designed and built, two-level, deluxe Purple Martin house in the field in front of SKLT's Barn in Matunuck. Modeled closely after the Barn itself, this mini-condo can house up to 16 martin families.

Purple martins are the largest members of the swallow family and are voracious insect eaters. Installation criteria are very specific for purple martin houses – 150 feet from any tall trees, 12 feet minimum off the ground, within a ¼ mile of a water body, and special anti-sparrow entrances. Assuming the martins like the site, summer visitors to Weeden Farm should have a comfortable, near bugless, experience of martin aeronautics.

Photo: Clark Collins



JOIN US IN PRESERVING OPEN SPACE IN SOUTH KINGSTOWN

Your support for open space preservation continues to strengthen our organization and invigorate our work. Join or renew your membership, make a general donation, or become an EverGreen member! SKLT is a non-profit 501(c)(3) organization so your donation is tax-deductible. As always, your generosity is greatly appreciated.

MEMBERSHIP:

I would like to: ☐ Join ☐ Renew

- ☐ Individual\$30
- ☐ Family\$50
- ☐ Protector\$75
- ☐ Steward\$100-\$249
- ☐ Guardian\$250-\$499
- ☐ Conservator\$500-\$999
- ☐ Benefactor.....\$1000+

Name: _____

Address: _____

City _____ State _____ Zip _____

Phone _____

E-mail _____

GENERAL DONATION:

I'm already a member, but I would like to make a general donation. Please accept my check in the amount of \$_____.



EVERGREEN:

I have already planned a gift to SKLT and qualify to be an EverGreen member through:

☐ Estate Plans ☐ Trust ☐ Other

- ☐ I am a landowner interested in preserving my land.
- ☐ Please contact me about making a Legacy gift.
- ☐ My employer will match my gift. I've enclosed a matching gift form.

Please make checks payable to:

South Kingstown Land Trust

227 Robinson Street, Wakefield, RI 02879



SOUTH KINGSTOWN LAND TRUST
227 ROBINSON STREET
WAKEFIELD, RI 02879

Non-Profit
Organization
U.S. Postage
PAID
Wakefield, RI
Permit No. 132

It's time to renew for 2013!
SKLT is a 501(c)(3) non-profit;
your gift is tax-deductible.

Site Lines



SKLT's ANNUAL MEETING – LEARN ABOUT “RHODY NATIVE” WITH HOPE LEESON



Hope Leeson

Come celebrate 30 years of land protection and stewardship work by the South Kingstown Land Trust! We'll begin with our business meeting to review 2012, elect trustees and conduct general business. At the end of the event, we'll celebrate our 30 years with cake! In between, we'll hear from a panel on the Rhody Native program. Rhode Island Natural History Survey botanist Hope Leeson will describe Rhody Native and its goal to promote the use of native plants grown from Rhode Island wild stock through seed collection and cuttings. We'll learn about why using native plants is important in our ecosystem. Also joining the panel are Karen Beck and Catherine Weaver, landscape architects, and Jane Case from Blue Moon Farm in South Kingstown, which sells these plants. We plan to have a variety of plants available to view and purchase. Rhody Native represents an opportunity to promote local Rhode Island businesses, educate the public about our native biodiversity, and improve our natural environment.