



# Site Lines

Fall 2025  Open Space Makes All the Difference



## Stewardship in Action: Strengthening Monitoring and Enforcement in 2025

**SKLT's Stewardship and Compliance — boots on the ground and eyes on the legal documents protecting conserved lands.**

When SKLT accepts a Conservation Easement\* or outright ownership of land, we take on a lifelong, legally binding responsibility to ensure the protections in a Conservation Easement or Deed to Development Rights are upheld in perpetuity. These restrictions might include prohibiting pesticides or herbicides, building structures or roads, dumping yard waste, or disturbing habitat.

**Enforcement of property restrictions is not optional—it is the core of land trust work.**

Each year, staff and volunteers visit every SKLT property equipped with Landscape software on their phones to track their route on an aerial map of the parcel, geolocate any photo documentation, and allow for notes to be taken while in the field. SKLT has also begun “remote monitoring,” using the publicly accessible aerial mapping that the South Kingstown Planning/WebGIS Department hosts and updates.

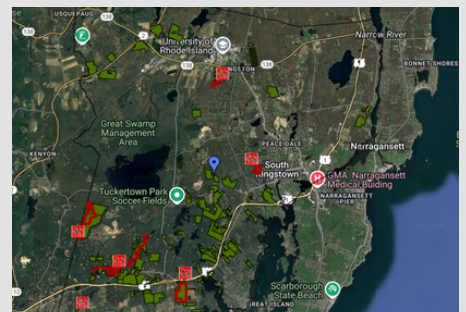
Martha Day, a retired attorney and former Board member who is new to the staff, reviews each of these monitoring reports. Notes of concern prompt verification in the field, a deep dive into the property files, an analysis of the easement terms, additional review from other staff members, and reaching out to landowners when concerns arise. Detecting and addressing issues early—such as clearing land, dumping, misplaced fences, or unauthorized land uses—is critical. Most are resolved through communication and cooperation, with legal action taken only as a last resort. SKLT participates in TerraFirma Risk Retention Group LLC, a charitable risk pool for conservation organizations, to ensure that we have the resources those rare times when litigation is necessary.

Attention to detail and strict protocols have earned SKLT its standing as an accredited land trust. To maintain our accreditation by the Land Trust Accreditation Commission (up for renewal next year), we must continue to demonstrate rigorous monitoring, accurate recordkeeping, and consistent implementation of policies.

**Stewardship is more than a task—it is a promise. Monitoring and enforcement are how we keep that promise, ensuring the lands entrusted to us today remain protected tomorrow and for generations to come.**

— Martha Day, Stewardship & Compliance Coordinator

Have questions? Reach out to Martha Day at [Martha.Day@sklt.org](mailto:Martha.Day@sklt.org)



\*A conservation easement is a legal agreement that limits how a property can be developed or used in order to protect its natural or agricultural value. The landowner keeps ownership and can continue using the land—such as for farming—while the Land Trust monitors and enforces the rules to ensure the land stays protected in perpetuity.

Images Left to Right:  
Encroachment examples onto SKLT protected property to the southeast (images 1 & 2).  
GIS Map of all SKLT Protected Properties (image 3).

# Milestones

Summer is always a whirlwind at SKLT—filled with field research on native plants, bees, bluebirds, and fishers, along with farming, mowing, wall repairs, trail maintenance, and more.

In August, we came together for the Great Outdoors Celebration & Auction. The weather was a perfect Rhode Island afternoon, the bidding was lively, and the company was excellent. I encourage you to take a look at the sponsor list on our website—their leadership made this year’s Celebration a great success!

We’re delighted to welcome three new board members: Katharine Estes, Peter Klenk, and Deb Pare. At the same time, we bid a grateful adieu—but not farewell—to Ann Gardner. Her energy and creativity in developing SKLT’s outreach and marketing have left a lasting mark, and while she steps away from the board, we thank her deeply for her service and wish her well in all that comes next. Please reach out to Heather Mae Breau or Ted Watson if you would like more information about board service.

Because of your support, we are thrilled to begin the long-awaited rebuild of Yawgoo Trail. Construction is slated to start in mid-September, and we couldn’t have reached this milestone without the generosity shown during “Fund the Need” at this year’s Celebration.

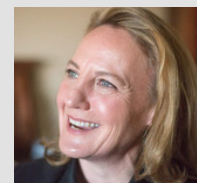
Fall is filled with programs, hikes, tours, and classes. The Barn will continue to provide a home for Ocean State Kids’ programs, and Tuesday morning is always looking for more volunteers.

*Open space makes all the difference....*

**Happy Fall!**



Julia Fry Landstreet  
Executive Director



## South Kingstown Land Trust

### Board of Directors

Heather Mae Breau, *Chair*  
Barbara Margolis, *Vice Chair*  
James L. Farrell, *Treasurer*  
Elise Torello, *Secretary*

Katharine Estes  
Peter Klenk  
Kevin McCloskey  
Susan Merrick  
Tim Meyer  
Deb Pare  
Andrew Scherer  
Edward Watson, Jr.

### Directors Emeriti

Linda Green  
Sophie Page Lewis  
Susan Seyfarth Lovejoy  
Michael Sherry

### Staff

Julia Fry Landstreet  
*Executive Director*  
Thomas Prescott Meyer  
*Land Management Director*  
Tasha Sussman Moss  
*Development & Outreach Coordinator*  
Martha Day  
*Stewardship Compliance Coordinator*  
David LaRocque  
*Land Operations Coordinator*

### Address

17 Matunuck Beach Road  
South Kingstown, RI 02879

**401-789-0962**

### Office Hours

Monday - Thursday  
9:00 a.m. - 4:00 p.m.  
and by appointment

**Website:** [sklt.org](http://sklt.org)

**Email:** [info@sklt.org](mailto:info@sklt.org)

---

The mission of the South Kingstown Land Trust is to protect and steward natural resources, open spaces, and cultural landscapes for the benefit of the community, now and forever.



## Farming with SKLT in 2025: Protecting the Past, Growing the Future

Farming in Rhode Island is a vital industry, but it also faces real challenges. Statewide, only 61,223 acres remain in production across 1,054 farms. The South Kingstown Land Trust (SKLT) helps keep farmland in use through lease and license agreements with 20 farmers who cultivate more than 225 acres of SKLT-owned land. Each agreement is tailored to support the property's Management Plan and conservation restrictions while also meeting the needs of the farmers who work the land.



**By protecting farmland, offering affordable leases, and supporting sustainable practices, SKLT ensures that Rhode Island farms—and the communities they feed—thrive.**

**Hollis Tucker Farm boasts prime soils, sits atop an important aquifer, and protects drinking water while producing fresh, local food.** It is currently home to eight dedicated farmers who all follow strict organic and regenerative practices. These farms, ranging in size from one to three acres, include a fruit tree orchard, multiple vegetable and flower growers, and an apiary buzzing with honeybees. Hollis Tucker is also the site of a long-term partnership between SKLT, URI Master Gardeners, and The American Chestnut Foundation, where American Chestnut trees are being grown, tested, and studied for the future.



After a multi-year effort, we successfully installed a second well and an irrigation system designed to serve multiple tenants at Hollis Tucker. A grant from the Natural Resource Conservation Service's (NRCS) Environmental Quality Incentives Program (EQIP) helped offset the costs, especially after the first well collapsed and had to be re-dug. NRCS also supported the safe decommissioning of the failed well to ensure the aquifer's water quality was protected.

Other SKLT-owned farms are home to hayfields, corn, livestock, and flowers. This fall, SKLT will begin electrifying Robinson Farm so we can install a well in preparation for reintroducing livestock and bringing more activity back to the property.



SKLT staff are contacted at least twice a month by farmers looking for land.

**We continue to review and improve our farmland properties to help meet this demand and to keep farmers farming in Rhode Island for years to come.**

**Support local agriculture by volunteering, buying local, and exploring SKLT's conserved lands!**

# Upcoming Programs, Lectures, and Hikes...Fall Potluck Series are Back!

## Four-Part Painting Course: Plein Air Classes with Trish Hurley

Wednesdays, 1:00 –3:30 p.m. • \$75 Members • \$100 Non-Members • \$25 Drop-In Class

Join artist Trish Hurley for a plein air sketching and painting session on SKLT properties. She'll start with a demo on spatial design and atmospheric perspective, then guide you through your own work. The session ends with a supportive group critique. Bring the medium of your choice—Trish will demo with drawing and oil. Please keep accessibility in mind when choosing materials. **Outdoors, less is more!**

**\*Course runs from September 10 – October 1\***



## Please **DO** Eat the Daisies:

### The Comestible Virtues of Non-Native Weeds and Invasives of RI

October 21st, 6:00 - 8:00 p.m.

Rhode Island is home to countless native plants—but what about the non-native weeds and invasives already thriving here? Join wild edibles expert and enthusiast Russ Cohen, author of *Wild Plants I Have Known...and Eaten*, for a lively slide presentation on more than two dozen tasty non-native plants you can find in the Ocean State. From familiar species like daisies and dandelions to the lesser-known Asiatic dayflower, Russ will share identification tips, edible parts, seasons, preparation methods, and guidelines for safe and responsible foraging.



## Moth Night! with David Gregg

October 28th, 6:00 - 8:00 p.m.

Join us for Moth Night! Celebrate Halloween weekend with a spooky—and fascinating—evening of “mothing” at Weeden Farm. Enjoy a potluck and a lecture with David Gregg, Executive Director of the Rhode Island Natural History Survey, followed by an evening stroll to view moths that have been attracted to illuminated sheets. David will guide us in identifying the species attracted to our “traps.”

Bring the kids and kick off Halloween with this special event!

**Sign Up for all Events at [sklt.org/events](http://sklt.org/events)**

## Volunteer Thank You Full Moon Bonfire

November 5th, 4:00 - 6:00 p.m. See you there!

Whether you're new to volunteering at SKLT or a seasoned regular, everyone is welcome! Join us for our Volunteer Thank You Party as we celebrate all of your hard work under the glow of the full Beaver Moon—and watch the brush piles of autumn olive and other invasive plants volunteers helped remove go up in flames!

All are welcome, let us know if you can join by emailing Tasha at [tasha.sussman.moss@sklt.org](mailto:tasha.sussman.moss@sklt.org)



# Guided Hikes

All Hikes are Free. Registration is required. Inclement weather cancels. All ages welcome. Please no dogs.

## Guided Hike at DuVal Trail System Friday, October 3rd, (9:00 – 11:00 a.m.)

Discover the glacier-carved hills and kettle ponds of the DuVal Trail System, shaped by the last Ice Age. With more than seven miles of paths, we can choose the length of our hike as we wander through oak forests, look for migratory birds, and explore centuries of natural and cultural history.



## Guided Hike: Rare Access to Closed SKLT Property Friday, November 7th, (9:00 – 11:00 a.m.)

Join SKLT for a rare opportunity to explore the wetlands, woods, and fields of a conserved property normally closed to the public. Directions will be provided to participants, and while the walk will take you off established trails, it should be suitable for most hikers. Don't miss this chance to discover one of SKLT's hidden gems!

## Guided Hike at Alewife Brook Preserve Friday, December 5th, (9:00 – 11:00 a.m.)

The one-mile Alewife Brook Trail offers a glimpse of southern Rhode Island's forests and wetlands. Wander beneath a canopy of oak, maple, pine, and hickory, then follow the brook and spot plenty of our festive native holly. This trail highlights the rich mix of upland and wetland habitats that make the landscape so vibrant.




## What in the Blazes? Don't Forget Your Blaze Orange

Hunting season is almost here, and hunters are ready to get back in action. Whether you're fishing, hiking, or walking the trails, blaze orange is a must! Hats plus a shirt, vest, or jacket—visible from all sides. **(Camouflage orange doesn't count).**

### Pro Tip: Protect your dog, too!

Tie on a bandana or use a blaze orange dog vest, and remember leash rules.

Want to stay safe and stylish? Grab a SKLT blaze orange cap—our Land Management Director's favorite season just got a little brighter.



Hunting season runs from  
September 15, 2025, through January 31, 2026.

For more information, go to [RIDEM Fish and Wildlife:  
www.dem.ri.gov/natural-resources-bureau/fish-wildlife](http://RIDEM Fish and Wildlife: www.dem.ri.gov/natural-resources-bureau/fish-wildlife)



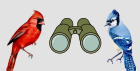
## Hop on an SKLT Gator Tour of Weeden Farm!

SKLT launched our new Gator Tours this summer, and we're so excited to share that they've been fully booked—thank you to everyone who signed up!

We run Gator Tours on the 2nd and 4th Friday of each month at 9:00 and 11:00 a.m.

These tours are designed with accessibility in mind: we know not everyone can walk the trails, so this is a chance to explore the 97 acres of Weeden Farm, see the fields, learn the farm's history, and current management programs from the seat of a gator. If you can walk the trails, we ask that you save these seats for others who can't. Don't worry—there are plenty of other ways to enjoy the trails!

Sign up at [sklt/events.org](http://sklt/events.org).



SKLT is participating in Birdability Week this year, October 20–26! Visit our website to learn more and sign up.

# New Series! EverGreen Legacy Voices: Meet Darrell H. Callicutt

*Since stepping into my role at SKLT, I've been eager to meet and share the stories of the incredible people in our EverGreen Legacy Society. Through this new series, EverGreen Legacy Voices, we'll highlight members' personal connections to the land and their commitment to conservation.*

*For our first story, I had the pleasure of sitting down with Darrell and his wife at their beautiful Matunuck home to hear firsthand why they chose SKLT—and what this landscape means to them.*

*If you're an EverGreen Legacy Member and would like to share your story, I'd love to hear from you!*

*Please reach out at [tasha.sussman.moss@sklt.org](mailto:tasha.sussman.moss@sklt.org).*



For years, Darrell would bundle his little girl into the stroller, leash up the family's chihuahua, and head out the screen door with a stack of bags. That's how his quiet alter ego—the “trash-collector vigilante”—was born. Along the Matunuck shoreline, he would spend hours filling bags with washed-up bottles, tossed-aside wrappers, cigarette butts, and everything in between. To him, this daily ritual wasn't about making a show—it was simply another way to serve, to care for the places he loves and the communities that depend on them.

That instinct to serve has guided Darrell his whole life. Raised in Alabama, he grew up near the Gulf Coast, helping his grandfather haul in seafood catches. **It was there—in the salt air and wide-open waters—that his love of unspoiled places first took root.** Later, he spent three decades in the Navy, much of it aboard submarines, followed by nearly 30 years at Electric Boat. In every role, Darrell has carried with him the same values: discipline, dedication, and a steady respect for land and sea alike.

Darrell married his wife after just one date, and they've now shared 45 years of marriage! After raising their family in Connecticut, the two returned to Rhode Island, drawn by an ad for the home where they live today. In its coastline, Darrell recognized the same sense of home and possibility that has sustained him since boyhood.

**Now, Darrell has made SKLT his “number one charity,” joining the EverGreen Legacy Society to help ensure that open fields, woodlands, and wetlands remain for generations to come.**

He first discovered SKLT simply by seeing the land and wanting to know more—and he hopes that same possibility of curiosity and wonder will be there for his grandchildren. For Darrell, his legacy gift is about stability and choice: **“I just want my grandchildren to have the choice to come here, even if they don't want to. This means it's always an option if they want it. It will always be here.”**

Whether babysitting his grandkids, walking the beach at sunset, or driving down a country road and seeing cornfields instead of condos, **Darrell finds joy in the simple, lasting presence of open space.** His quiet service—both on the beaches and through his legacy gift—helps make that promise possible.



— Tasha Sussman Moss, Development & Outreach Coordinator

## Make a Lasting Impact: Join the EverGreen Legacy Society

The EverGreen Legacy Society is a community of supporters who make a lasting impact through legacy gifts. By including SKLT in their will, retirement account, or other provision, members ensure their conservation values live on and that South Kingstown's open spaces, natural resources, and cultural landscapes will be protected for generations to come.

Scan the QR code to share your input and help guide the future of this program.

To our current EverGreen members: thank you—your foresight ensures that the places we all cherish will endure.

Have questions? Contact Julia Landstreet at [julia.landstreet@sklt.org](mailto:julia.landstreet@sklt.org)



# Join Us in Preserving Open Space in South Kingstown

Your support for open space preservation strengthens our organization and invigorates our work. Join or renew your membership, make a general donation, or become an EverGreen member! SKLT is a non-profit 501(c)(3) organization, so your donation is tax-deductible. Thank you!

## MEMBERSHIP

I want to  Join  Renew

- Individual .....\$30     Family .....\$50
- Steward .....\$100-\$249
- Guardian .....\$250-\$499
- Conservationist .....\$500-\$999
- Benefactor .....\$1,000-\$2,499

## GENERAL DONATION

I'm already a member, but I would like to make an additional donation in the amount of \$ \_\_\_\_\_.



I have already planned a legacy gift to SKLT and qualify to be an EverGreen member through

- Estate Plan     Trust     Other
- Please contact me about making a legacy gift

Name \_\_\_\_\_

Address \_\_\_\_\_ City \_\_\_\_\_ State \_\_\_\_\_ Zip \_\_\_\_\_

Phone \_\_\_\_\_ E-mail \_\_\_\_\_

## SUSTAINING MEMBERSHIP

This program allows our donors to easily establish and maintain their membership through a monthly, automatically recurring gift.

- I want to become a sustaining member at the monthly amount of \$ \_\_\_\_\_

Please charge my credit card: \_\_\_\_\_

Credit Card # \_\_\_\_\_

Exp. \_\_\_\_\_ Billing Zip Code \_\_\_\_\_

Name on Card \_\_\_\_\_

Signature \_\_\_\_\_

## OTHER SUPPORT

- I'm a landowner interested in preserving my land
- My employer will match my gift. I've enclosed a matching gift form

*Please make checks payable to: South Kingstown Land Trust, 17 Matunuck Beach Road, South Kingstown, RI 02879*



Great Outdoors Celebration & Auction, 2025



South Kingstown Land Trust  
 17 Matunuck Beach Road  
 South Kingstown, RI 02879

Non-Profit  
 Organization  
 U.S. Postage  
 PAID  
 Wakefield, RI  
 Permit No. 132



## Join Us at an Upcoming Program or Event

*Please register for all programs and events in advance at [sklt.org/events\\_calendar](http://sklt.org/events_calendar)*

Sept. 10 - Oct. 1	1 - 3:30 p.m.	Trish Hurley Plein Air Painting Classes, <i>The Barn</i>
Sept. 12	9 a.m. & 11 a.m.	Gator Tours, <i>The Barn</i>
Sept. 14	4 - 6 p.m.	EverGreen Legacy Society Gathering, <i>Private Home</i>
Oct. 3	9 - 11 a.m.	Guided Hike, <i>DuVal Trail System</i>
Oct. 10	9 a.m. & 11 a.m.	Gator Tours, <i>The Barn</i>
Oct. 16	6 - 8 p.m.	Potluck & lecture: Edible Plants with Russ Cohen, <i>The Barn</i>
Oct. 24	9 a.m. & 11 a.m.	Gator Tours, <i>The Barn</i>
Oct. 28	6 - 8 p.m.	Potluck & lecture: Moth Night! with David Gregg, <i>The Barn</i>
Nov. 5	4 - 6 p.m.	Volunteer Thank You Full Moon Bonfire, <i>Hollis Tucker Farm</i>
Nov. 7	9 - 11 a.m.	Guided Hike, <i>SKLT Closed Property</i>
Nov. 7	9 a.m. & 11 a.m.	Gator Tours, <i>The Barn</i>
Nov. 21	9 a.m. & 11 a.m.	Gator Tours, <i>The Barn</i>
Dec 5	9 - 11 a.m.	Guided Hike, <i>Alewife Brook Trail</i>

FOLLOW US ON:



@South Kingstown Land Trust



@SKLandTrust



@SKLandTrust

Not on the SKLT email list?  
 Contact us at [info@sklt.org](mailto:info@sklt.org)

